





Subsidiary of **Sayin Construction**

Intro

Hello, We Are
Sayın Egypt and
We're Here To Make
Your Dreams
Come True.

Table of Contents

06	OUR FOUNDER
08	ABOUT US
09	CORPORATE STRATEGY
10	CORE VALUES
16	ENGINEERING
17	CONSTRUCTION
18	EXPERIENCED SECTORS
19	SAYIN İNŞAAT BY NUMBERS
20	INDUSTRIAL BUILDINGS
64	OTHER BUILDINGS
84	REFERENCES
86	CONTACT US

Greetings

Our Founder

Dear friends,

Sayın İnşaat was established in 1994 in order to bring a new dimension and understanding to the construction contractor understanding that became outdated in construction and to set the industry standards again. This innovative approach set his goal to create a modern machine park, establish a qualified staff and adopt a total quality understanding by keeping customer satisfaction at the forefront in the first days. Our company, which reached this goal in its early years, has constantly updated itself by fulfilling the requirements of the time.

In our early days, our clients, who required superior engineering and gave us the chance by delivering their comprehensive works, are among the main factors contributing to our company to come to these days, despite we had not got sufficient experience and limited capacity. We are on the path of our vision by continuing our day-to-day development by making good use of these opportunities, which they recognize with our devoted efforts. With our experience and knowledge of more than a quarter century, we have become a solution partner for the different requirements of our customers in heavy industry facilities.

The importance of human is in its being worth. It is part of our mission to build the structures we need to preserve and uphold this value in the best way possible. Many of my colleagues, who

our mission overlaps, have become valuable stakeholders of our company as parts of this new understanding.

Big firms are built on big products. That's why we have to be very particular about doing the best we can. We must find our mistakes and correct them to perfection.

It is one of our priorities to produce with a lean production approach in construction, with less waste for the environment and respecting the nature. We will continue to produce and work in order to make our world a more livable place for humanity and leave a livable world to future generations by carrying our national recognition to the international level.

M. Fahri Sayın

Civil Engineer
Founder and President



Sayin Egypt

Sayin Egypt Company is Egypt General contracting Company that has been working various cities of Egypt and is established in 2024. SAYIN had worked and has been working with significant national and international clients in multiple industries.

Having completed many remarkable Industrial, commercial and residential projects in years, SAYIN had a chance to extend Its capabilities and skills to provide Its clients with diversified solutions on sophisticated projects, which enabled SAYIN to work in different size and type of projects at the same time.

In addition to General Contractor Services that SAYIN provides, the company also offers Engineering and Solution Partnership Services that are based on the unique demands of clients with particular project requirements.



About Us

CORPORATE STRATEGY

Vision

Forever thrivingly to become
Turkey's leading and world wide
known industrial builder.

“ **OUR MISSION
HAS ALREADY
STARTED!** ”

Mission

We need to deliver an impeccable product for our clients. We will adopt innovative digital design and application for manufacturing approaches to deliver a revolutionary offer for sector. Our mission is to enhance in an environment of reciprocal commitment, loyalty and respect. We determine to protect our prestige of being an expert construction company that complete the works within budget, on time and contractual scope of quality. We aim to be a successful industrial construction commitment company is desired by customers. Hereafter, a quality end result will continue to grow our reputation with our clients long after we have finished our works. We will constructively challenge our current methods and enhance the quality, efficiency, effectiveness, sustainability and last user experience for our clients.

About Us

CORE VALUES

QUALITY

Perpetual enhancement of quality is the most crucial fundamental factors that enable SAYIN EGYPT to get a competitive advantage in the construction sector in respect to expected quality, timely and reasonable budget.

- We must complete every project according to scope of contract. Thus, our essential construction methods and business approach based on having global validity certifications such as ISO9001, ISO14001, ISO45001.
- We obsess about quality and make an effort to get it right first time and recognising that a quality begins with detailed design.
- SAYIN EGYPT has essential objective is to succeed zero fault.
- We have Lessons Learned understanding and database since 2015, thus before confronting system defects our effective project teams can prevent the case.
- SAYIN EGYPT has adopted PDCA cycle in order to prevent any system defects.

Act

- Corrective action
- Prevent defect from re-occurring

Check

- Check all non conformities against specification
- Check work executed per approved shop drawing
- Check approved material installed



Plan

- Prepare shop drawings
- Submit materials
- Get shop drawing approved
- Get materials approved

Do

- Follow approved shop drawings
- Use approved materials
- Follow method of statement
- Follow manufacturer's recommendations

SUSTAINABILITY

We have an object beyond profit. Which means that the energy, aspiration and commitment of our company family can reinforce society's welfare beyond the construction we build. Sustainability is at the center of our business strategy. Since 1994 we have been ambitious regarding leaving the true kind of social, environmental and economic hand down.

Sayin Egypt Construction Company (SAYIN) see sustainability in widest sense as;

- Generating a unique difference to the local people of project location such as by supplying work experience and new apprenticeships opportunity
- Trying to reduce carbon emissions for instance via systematical logistics and supplying a construction material which has less carbon foot print and helping our supply chain to execute the same understanding.
- Sustainability is embedded in time, cost, quality, clients and ultimately our legacy and continuous growth.

RESPECT

- We value and promote our brand and heritage.
- We aim to generate long-term loyalty with our customers.
- Stakeholders, such as community engagement is important.
- We encourage localism in terms of using resources nearby the project location.
- We determined to decrease our carbon footprint by procuring resources on a sustainable basis.
- We establish good relations with project influenced communities and neighbours.

PEOPLE

We place a strong emphasis on learning and development. Employees who are taking on new difficulties and learning new skills are much more likely to come up with new ideas. Businesses and practices can arise the volume on innovation even further by supplying the right areas such as forums, working groups, motivation organizations etc. where people from different disciplines and functions can work collaboratively for a common mission.

- Health and safety fact always comes ahead.
- Mutually complementary work teams are the most effective. In order to do so, we employ experts and professionals to develop our knowledge in every type of construction.
- Becoming a good company to enhance a career for sector employees.
- We create a value culture where our people encouraged to imagine and supply each opportunity to cultivate these dreams into reality.

SUPPLY CHAIN

Our supply chain should be a reflection of the company. Thus, we intended to ensure supply partners achieve the highest standards. We procure goods and services according to our sustainable procurement policy. We do not distinguish our subcontractors and suppliers from our own workers. We implement the same set of H&S standards that we hold ourselves responsible to and expect them to obey with them as well. We determine to promote and enhance our subcontractors by ensuring that fair contract prices and terms are applied and respected.

We evaluate and procure work in accordance with following criterias

- Do they have quality management systems in order to manage requirements of each construction works?
- Can subcontractors continue to develop and improve?
- Do they have related environmental policy?
- Are they perceptual to the management and promotion education opportunities or training and enhancement of site operatives?



HEALTH & SAFETY

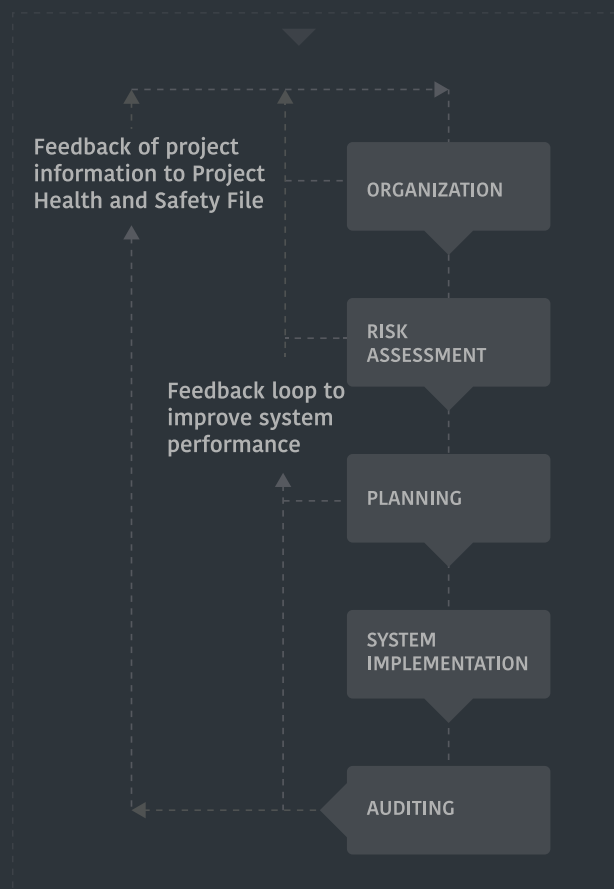
Protection the health, safety and well-being of our employee at work is of supreme significance and we work to supply working environments which are safe and without risk for health of our staff.

- Communication is a key component of our H&S Management. To be able to engage with our employees at all levels, we use different communication techniques
- Our organization for H&S Management involves establishing the responsibilities and interpersonal relationships essential to encourage a favourable H&S culture on a site.

SAYIN has developed implemented H&S policy and Management system. So we;

- Have organizational structure for health and safety management.
- Have developed necessary supportive culture to provide successful implementation of policies
- Carry out individual project risk assessment.
- Train all employees such as safe working practices, supplying workforces with proper information and instructions.
- Provide personal protective equipment and training to use
- Continously monitor H&S management activities.
- Have access to trustworthy medical advice on occupational health

- Conduct environmental surveys at site and office to provide hygiene and safety
- Provide the provision of qualified First Aid Staff and facilities.
- Encourage our employees to maintain their health by providing them information and advice.





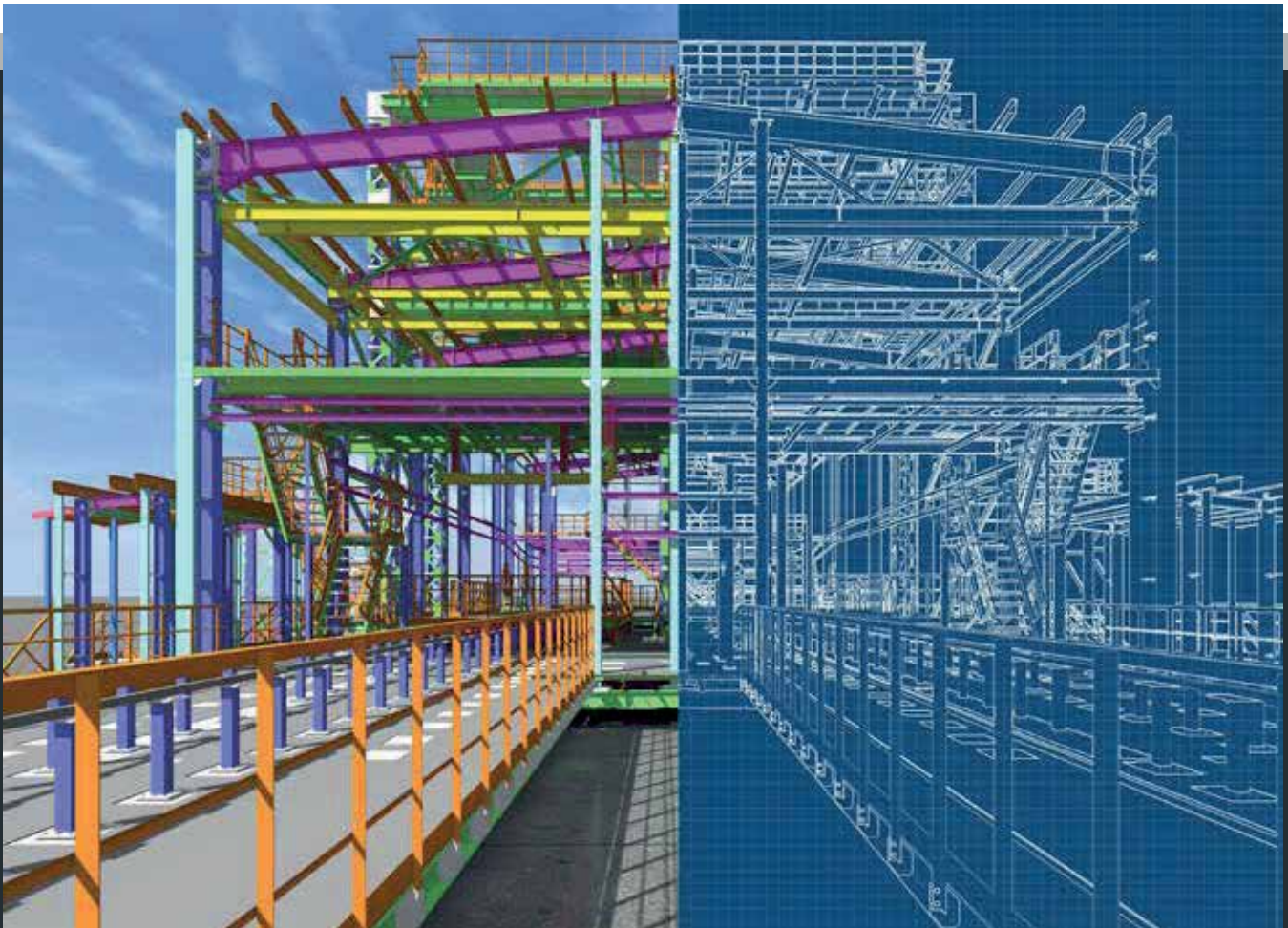
About Us

ENGINEERING

Our aim is to pro-actively impact and manage the evolution of every step of design thus we can offer deliverable solutions. Sayin Egypt Construction Company (SAYIN) Engineering Group presents civil, structural, architectural, electrical, mechanical, process and piping design.

SERVICES

- Feasibility.
- Detail engineering according to customer requirements.
- Technical drawings for application.
- Commissioning management.



About Us

CONSTRUCTION

We present full of ability in any type of construction, creating effective teams of construction experts. Versatile construction management teams and methods are suitable for planning, executing and monitoring grand and complex projects to secure timely, accurate quality and safe construction.

As being contractor of the construction sector we have ability to work on different type of contracts such as;

- Design / Bid / Build (Traditional)
- Design Build
- Project Manager Type
- Guaranteed Maximum Price
- Build-Own-Operate-Transfer
- Turnkey Contracts

During construction phase, SAYIN has several steps to ensure the project progress accurate. These are;

- Planning and scheduling
- Procurement
- Monitoring and control
 - Subcontractors approval
 - Shop drawings
 - Procurement
 - Equipment and workforce
 - Cashflow curve
 - Time control
 - Progress reports and meetings
 - Variation orders
 - Inspections
 - Testing
 - As-built drawings
 - Commissioning

Sayin Egypt Construction Company (SAYIN) has succeeded and well know for its capability to manage particular construction manpower from different regions and nationalities. SAYIN is also well know regarding to employ local workforces as highest as possible. By this way, every project contributes the local economy of the project location. Besides, SAYIN owns machinery equipment for every step and type of construction including cranes and piling equipment.



EXPERIENCED SECTORS



Power Plant
Nuclears



Heavy Industry
Process Plants



Petrochemicals and
Natural Gas Plants



Automobile
Factory Campus



Hydro Power
Plants



Chemical
Industry



Metallurgy
Mining



Food Industry
Plants



Infrastructure and
Transportation



Retail



Business
Centers



Educational
Buildings



Residential

SAYIN EGYPT

BY NUMBERS



Establishment
1994



Experience in Heavy Industrial
Buildings
Over 30 years



Peak Number of Employees
1500+



Completion M² so far
2.500.000+ m²



PROJECTS

Projects

INDUSTRIAL BUILDINGS

AKKUYU NUCLEAR POWER PLANT

EL-DABAA NUCLEAR POWER PLANT

MERCEDES - BENZ HE82025 PROJECT NE FINISH HALL CONSTRUCTION

EKU FREN INDUSTRIAL CONSTRUCTION

LIPTON TEA PACKAGING PLANT

NESOS KANDIRA PRODUCTION FACILITY

POLIMER AR-GE PRODUCTION AND ADMINISTRATION BUILDING

BRITISH MOTOR COMPANY (BMC)

TOYOTA AUTOMOTIVE

HYUNDAI AUTOMOTIVE

ERDEMIR STEEL

TURKISH PETROLIUM REFINERIES (TÜPRAŞ)

OMV PETROLIUM OFFICE

ASSAN ALUMINIUM COMPANY

BRIDGESTONE SABANCI (BRISA)

OTOKAR AUTOMOTIVE & DEFENSE INDUSTRIES

FORD MOTOR GÖLCÜK

FORD TRUCK İNÖNÜ

HYUNDAI STEEL COMPANY

KNAUF GMBH

POSCO ASSAN TST

CPL CARTONPLAST GROUP GMBH

RÖNESANS BOTAŞ NATURAL GAS STORAGE FACILITY

TOYOTA TSUSHO CORPORATION

GOODYEAR TIRES

HENDEK GALVANIZED STEEL

Projects

Akkuyu Nuclear Power Plant

** It is not allowed to take & publish pictures of any part of the facilities due to Owner's contractual restrictions.

Projects Detail

Job Type	Nuclear Power Plant
Owner	ROSATOM / JV
Project	Nuclear Power Plant LOT 8, LOT 11, LOT 22 LOT 59, LOT 90
Work Formation	SMETA / Turn-key
Collaboration Period	Under Construction
Location	Mersin, Turkey
Construction Area	158.000 sqm





EL-Dabaa Nuclear Power Plant

Projects Detail

Job Type	EL-Dabaa Nuclear Power Plant
Owner	NPPA / ROSATOM / ASE
Project	Nuclear Power Plant
Contract Type	SMETA
Collaboration Period	Under Construction
Location	EL-Dabaa / EGYPT
Construction Area	150.000 sqm



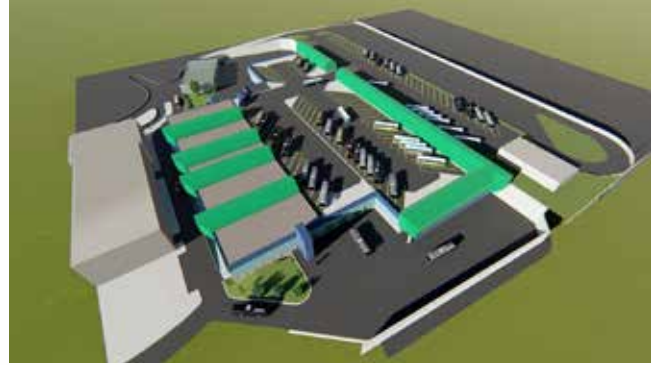


Projects

Mercedes-Benz HEX2025 Project

Automotive Industry

Projects Detail	
Job Type	Industrial Construction
Owner	Mercedes - Benz Türk A.Ş.
Project	HEX2025 Project New Finish Hall Construction
Contract Type	Unit Price / Turn-key
Collaboration Year	Under Construction - 2023
Location	İstanbul, Turkey
Construction Area	20.000 sqm





EKU FREN Industrial Construction

Projects Detail

Job Type	Industrial Construction
Owner	EKU FREN VE DÖKÜM SANAYİ A.Ş
Project	Steel Structure Works and Silo Manufacturing and Assembly
Contract Type	Turn Key
Collaboration Period	2024-2025
Location	Kocaeli / TÜRKİYE
Construction Area	25.000 sqm





Projects

Lipton Tea Packaging Plant

Food Industry

Projects Detail

Job Type	Industrial Construction
Owner	Lipton Teas and Infusions
Project	Lipton Tea Packaging Plant
Contract Type	Unit Price / Turn-key
Collaboration Year	Under Construction - 2023
Location	Sakarya, Turkey
Construction Area	14.000 sqm





Projects

Nesos Kandıra Production Facility

Food Industry

Projects Detail

Job Type	Industrial Construction
Owner	Nesos Gıda San. A.Ş.
Project	Nesos Kandıra Production Facility
Contract Type	Unit Price / Turn-key
Collaboration Year	Under Construction - 2023
Location	Kocaeli, Turkey
Construction Area	11.775 sqm





Projects

Polimer Ar-ge P4 Building

Chemical Industry

Projects Detail	
Job Type	Industrial Construction
Owner	Polimer Ar-ge Plastik San. ve Tic. A.Ş.
Project	Polimer Ar-ge Production and Administration Building
Contract Type	Turn-key
Collaboration Year	Under Construction - 2023
Location	Kocaeli, Turkey
Construction Area	11.000 sqm



Projects

British Motor Company (BMC)

Defense Industry

Projects Detail	
Job Type	Industrial Construction
Owner	British Motor Company (BMC)
Project	Automotive & Defense Industries Phase 1 - Military Tank Factory
Contract Type	Lump-sum / Turn-key
Collaboration Year	2019-2021
Location	Sakarya, Turkey
Construction Area	100.000 sqm







Toyota Automotive

Projects Detail

Job Type	Industrial Construction
Owner	Toyota Automotive
Project	Automobile Factory Campus
Work Formation	Multi-site
Collaboration Period	1994 – 2023
Location	Sakarya, Turkey
Construction Area	55.000 sqm









Hyundai Automotive

Projects Detail	
Job Type	Industrial Construction
Owner	Hyundai Automotive
Project	Automobile Factory Campus
Work Formation	Multi-site
Collaboration Period	1998 – 2022
Location	Kocaeli, Turkey
Construction Area	65.000 sqm







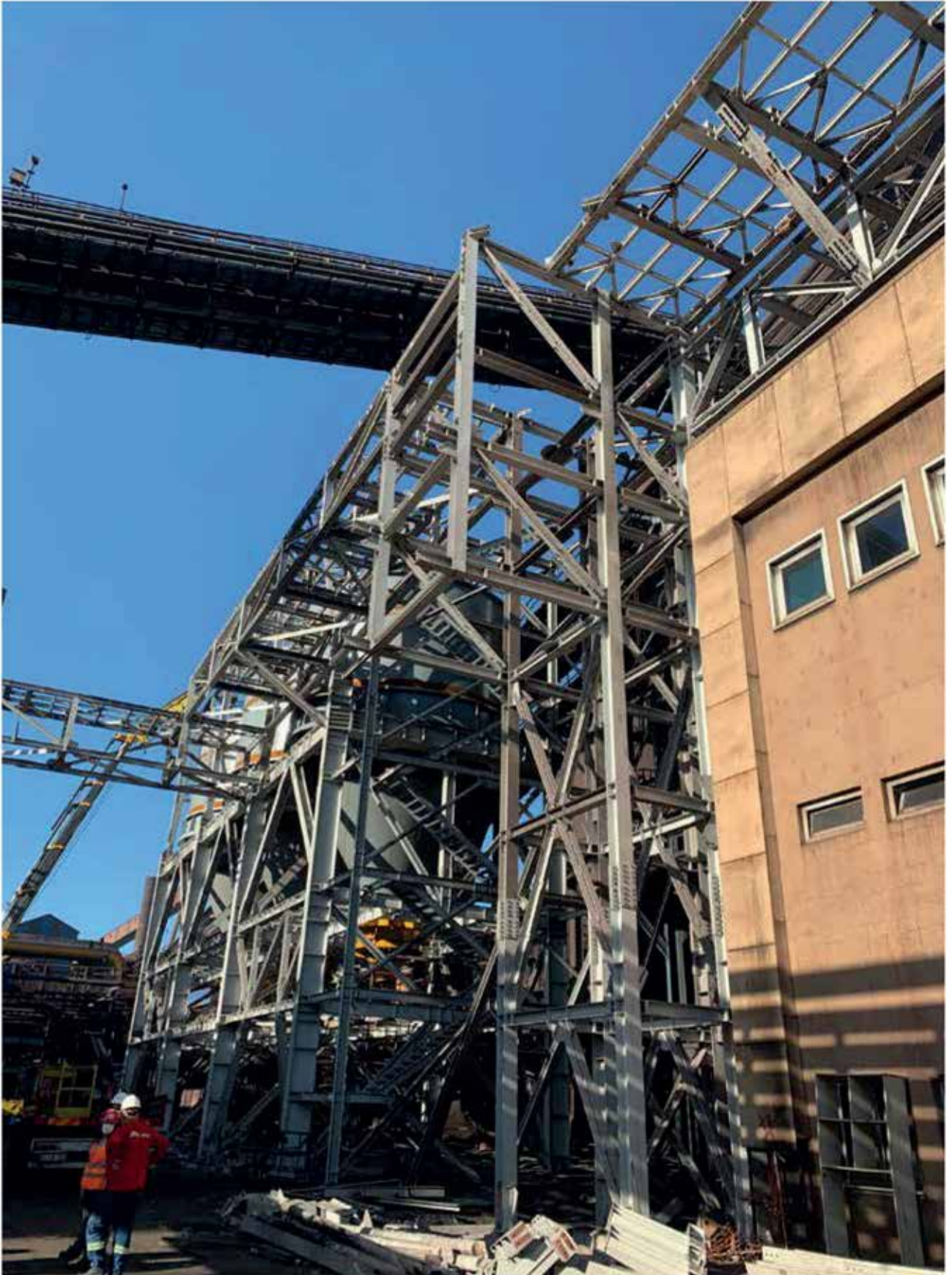


Erdemir Steel

Projects Detail

Job Type	Industrial Construction
Owner	Erdemir Steel
Project	Slag Granules Plant, NO.3 Warehouse, Kizilcapinar Hydro Power Plant
Contract Type	Unit-Price / Turn-key
Completion Year	2020 - 2021
Location	Kdz. Ereğli, Zonguldak, Turkey
Construction Area	55.000 sqm

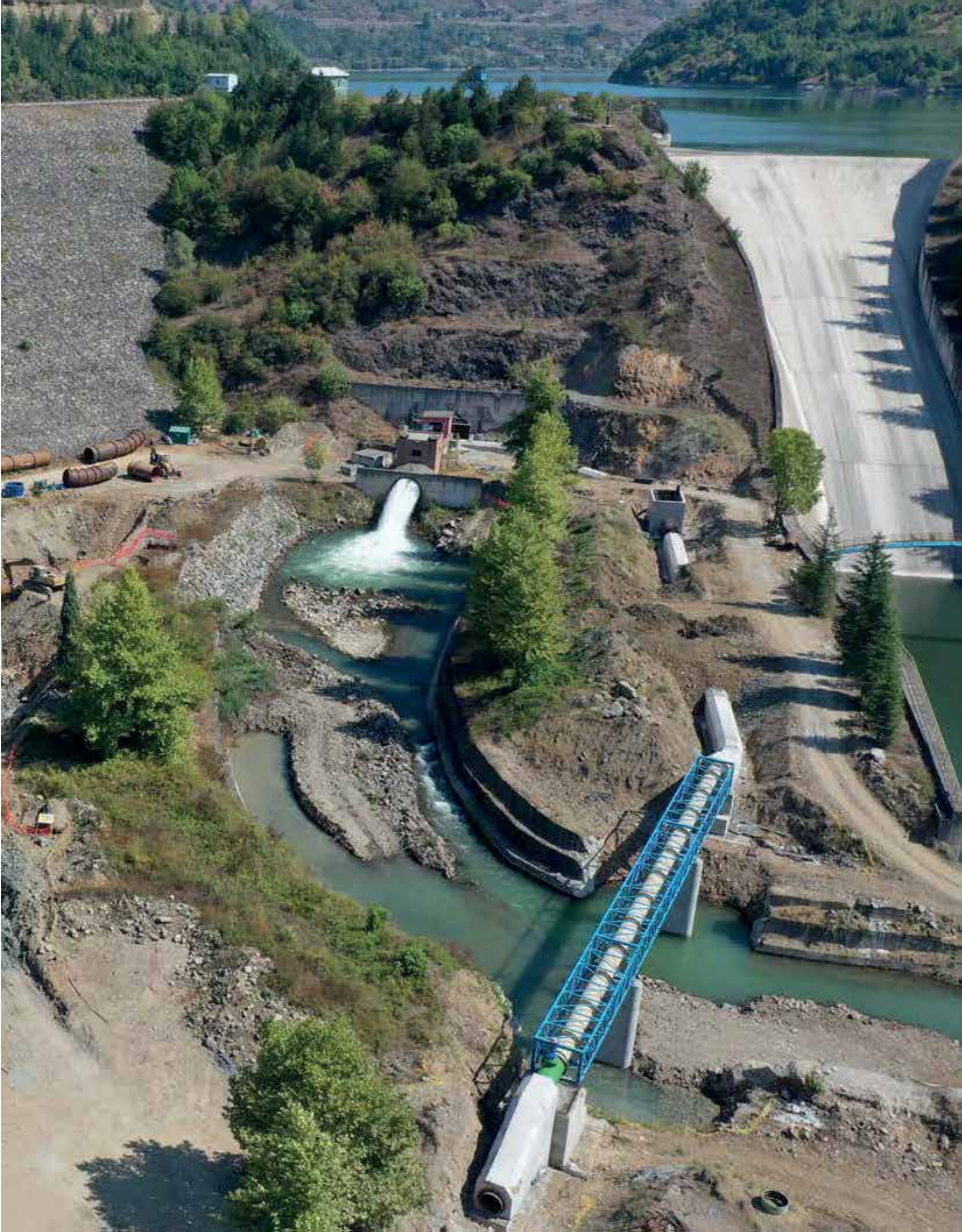












Projects

Turkish Petroleum Refineries (TÜPRAŞ)

Projects Detail

Job Type	Industrial Construction
Owner	Turkish Petroleum Refineries (TÜPRAŞ)
Project	Oxygen Recharge Units & Buildings
Work Formation	Multi-site
Collaboration Period	2017 – 2022
Location	Kocaeli, Turkey
Construction Area	8.500 sqm

** It is not allowed to take & publish pictures of any part of the facilities due to Owner's contractual restrictions.



Turkish Petroleum Refineries (TÜPRAŞ)

Projects Detail

Job Type	Industrial Construction
Owner	Turkish Petroleum Refineries (TÜPRAŞ)
Project	Laboratories & Auxiliary Buildings
Work Formation	Multi-site
Collaboration Period	2018-2019
Location	Kırıkkale, Turkey
Construction Area	3.500 sqm

** It is not allowed to take & publish pictures of any part of the facilities due to Owner's contractual restrictions.

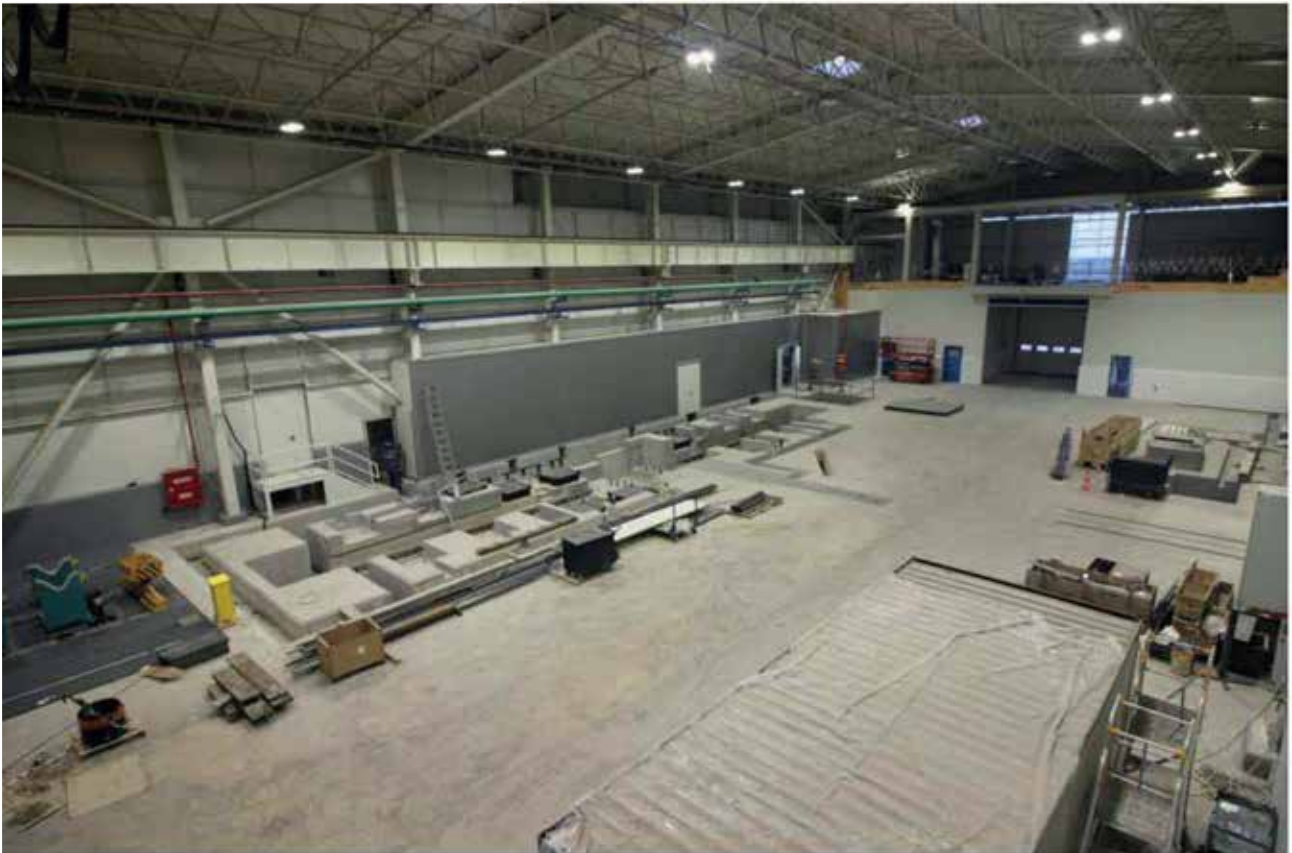


Projects

Assan Aluminium Company

Projects Detail

Job Type	Industrial Construction
Owner	Assan Aluminium Company
Project	Aluminum Factory Campus
Contract Type	Unit Price / Structural Works
Collaboration Period	2017-2018
Location	Kocaeli, Turkey
Construction Area	10.000 sqm







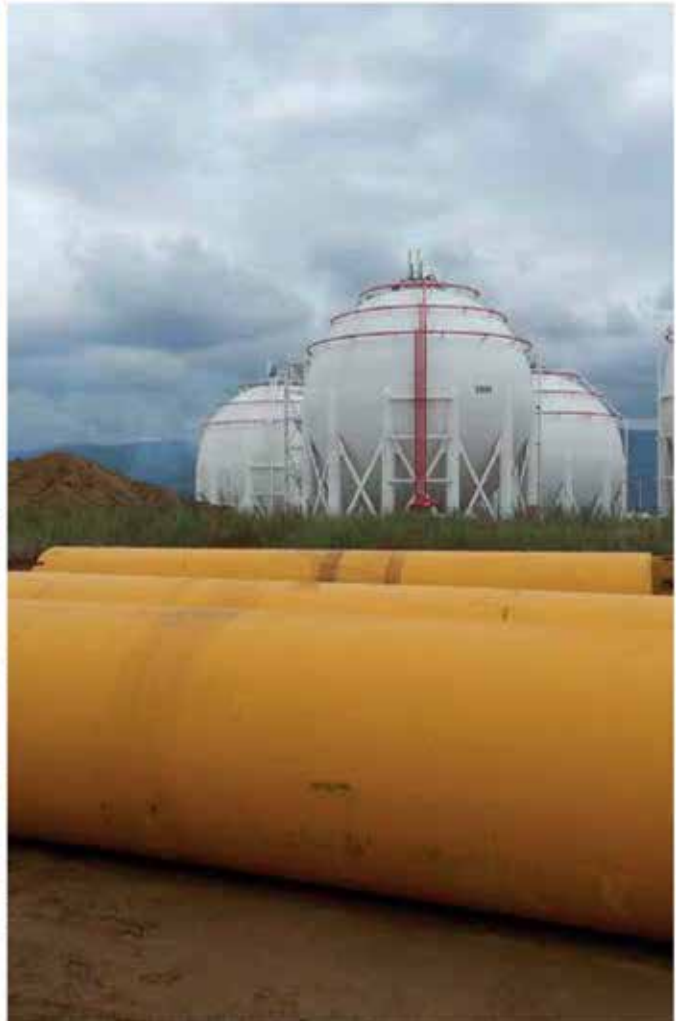
Projects

OMV Petrol Ofisi

Projects Detail

Job Type	Industrial Construction
Owner	OMV Petrol Ofisi
Project	LNG Storage Facility
Contract Type	Lump-sum / Structural Works
Collaboration Period	2013
Location	Kocaeli, Turkey
Construction Area	20.000 sqm





Projects

Bridgestone Sabanci (BriSa)

Projects Detail

Job Type	Industrial Construction
Owner	Bridgestone Sabanci (BriSa)
Project	Tyre Manufacturing Facilities
Work Formation	Multi-site
Collaboration Period	2007 – 2016
Location	Kocaeli, Turkey
Construction Area	10.400 sqm

** It is not allowed to take & publish pictures of any part of the facilities due to Owner's contractual restrictions.



Projects

Otokar Automotive & Defense Industries

Projects Detail	
Job Type	Industrial Construction
Owner	Otokar Automotive & Defense Industries
Project	Electromagnetic Compatibility Laboratories
Work Formation	Multi-site
Collaboration Period	2010 - 2014
Location	Sakarya, Turkey
Construction Area	5.700 sqm

** It is not allowed to take & publish pictures of any part of the facilities due to Owner's contractual restrictions.



Projects

Ford Motor Company - Cars

Projects Detail

Job Type	Industrial Construction
Owner	Ford Motor Company - Cars
Project	Additional Production Lines
Work Formation	Multi-site
Collaboration Period	2011 – 2014
Location	Kocaeli, Turkey
Construction Area	7.500 sqm

** It is not allowed to take & publish pictures of any part of the facilities due to Owner's contractual restrictions.



Projects

Ford Motor Company - Trucks

Projects Detail

Job Type	Industrial Construction
Owner	Ford Motor Company - Trucks
Project	Extension of Existing Buildings
Work Formation	Multi-site
Collaboration Period	2011 – 2013
Location	Eskişehir, Turkey
Construction Area	4.800 sqm

** It is not allowed to take & publish pictures of any part of the facilities due to Owner's contractual restrictions.



Projects

Hyundai Steel Company

Projects Detail

Job Type	Industrial Construction
Owner	Hyundai Steel Company
Project	Automotive Steel Factory
Contract Type	Lump-sum / Turn-key
Collaboration Period	2012
Location	Kocaeli, Turkey
Construction Area	22.000 sqm







Projects

Knauf Gmbh

Projects Detail

Job Type	Industrial Construction
Owner	Knauf Gmbh
Project	Insulation Materials Factory
Contract Type	Design-Build
Collaboration Period	2012
Location	Eskisehir, Turkey
Construction Area	12.000 sqm





Projects

Posco Assan TST

Projects Detail

Job Type	Industrial Construction
Owner	Posco Assan TST
Project	Stainless Steel Production Factory
Contract Type	Unit Price / Structural Works
Collaboration Period	2012
Location	Kocaeli, Turkey
Construction Area	8.500 sqm



Projects

CPL Cartonplast Group Gmbh

Projects Detail

Job Type	Industrial Construction
Owner	CPL Cartonplast Group Gmbh
Project	Reusable Layer Pad Factory
Contract Type	Unit Price / Turn-key
Collaboration Period	2014
Location	Bursa, Turkey
Construction Area	6.000 sqm







Rönesans Botaş Natural Gas Storage Facility

Projects Detail

Job Type	Industrial Construction
Owner	Rönesans Heavy Industries
Project	Natural Gas Storage Facility
Contract Type	Unit Price / Turn-key
Collaboration Period	2018
Location	Silivri, Turkey
Construction Area	157.000 sqm



Projects

Toyota Tsusho Corporation

Projects Detail

Job Type	Industrial Construction
Owner	Toyota Tsusho Corporation
Project	Automobile Parts Factory
Contract Type	Lump-sum / Turn-key
Collaboration Period	2014
Location	Sakarya, Turkey
Construction Area	7.500 sqm



Projects

Volvo & Renault Trucks

Projects Detail

Job Type	Industrial Construction
Owner	Volvo & Renault Trucks
Project	Truck Dealer Facility
Contract Type	Lump-sum / Turn-key
Collaboration Period	2008
Location	Kocaeli, Turkey
Construction Area	9.600 sqm



Projects

Goodyear Tires

Projects Detail

Job Type	Industrial Construction
Owner	Goodyear Tires
Project	Tire Production Factory
Contract Type	Multi-site
Collaboration Period	1996 - 2007
Location	Sakarya, Turkey
Construction Area	9.000 sqm



Projects

Hendek Galvanized Steel

Projects Detail

Job Type	Industrial Construction
Owner	Hendek Galvanized Steel
Project	Galvanized steel manufacturing facility
Contract Type	Lump-sum / Turn-key
Collaboration Period	2017
Location	Hendek, Turkey
Construction Area	7.500 sqm





Projects

OTHER BUILDINGS

İSTANBUL STOCK EXCHANGE (BİST)

SAKARYA CHAMBER OF CAR DEALERS

PALMIYE RESIDENCE

DEMİRCİOĞLU GROUP

BURGER KING

SABANCI UNIVERSITY

KOCAELİ COLLEGE

HARMANLIK MANSIONS

YANIKKÖY VILLAS

YEDİEVLER ESTATES

HACIMERCAN HOUSES

VOLVO & RENAULT TRUCKS

Projects

İstanbul Stock Exchange (BIST)

Projects Detail

Job Type	Commercial Construction
Owner	İstanbul Stock Exchange (BIST)
Project	Stock Exchange & Office Buildings
Contract Type	Lump-sum / Turn-key
Collaboration Period	2017
Location	İstanbul, Turkey
Construction Area	35.000 sqm





Projects

Sakarya Chamber of Car Dealers

Projects Detail

Job Type	Commercial Construction
Owner	Sakarya Chamber of Car Dealers
Project	Car Dealers Center
Contract Type	Lump-sum / Turn-key
Completion Year	Under Construction - 2020
Location	Sakarya, Turkey
Construction Area	33.000 sqm



Projects

Atso

Projects Detail

Job Type	Commercial Construction
Owner	S.S. ATSO TOPLU ISYERİ YAPI KOOPERATİFİ
Project	S.S. ATSO TOPLU ISYERİ YAPI KOOPERATİF PROJESİ
Contract Type	Lump-sum / Turn-key
Completion Year	Completed in 2022
Construction Area	35.000 m2







Projects

Palmiye Residence

Projects Detail

Job Type	Residential Construction
Owner	Palmiye Residence
Project	Residential Building
Contract Type	Lump-sum / Turn-key
Collaboration Period	2017
Location	İstanbul, Turkey
Construction Area	26 - 4500 sqm





Projects

Demircioglu Office Building

Projects Detail

Job Type	Commercial Construction
Owner	Demircioglu Grup
Project	Office Building
Contract Type	Lump-sum / Turn-key
Collaboration Period	2016
Location	Sakarya, Turkey
Construction Area	3.600 sqm



Projects

Burger King Restaurant

Projects Detail	
Job Type	Commercial Construction
Owner	Burger King
Project	Restaurant Branch
Contract Type	Lump-sum / Turn-key
Collaboration Period	2010
Location	Düzce, Turkey
Construction Area	2.500 sqm



Projects

Sabancı University

Projects Detail

Job Type	Educational Construction
Owner	Sabancı University
Project	Art Center & Dormitories
Work Formation	Multi-site
Collaboration Period	2016 - 2020
Location	İstanbul, Turkey
Construction Area	15.000 sqm





Projects

Kocaeli College

Projects Detail

Job Type	Educational Construction
Owner	Kocaeli Kultur College
Project	K-12 School Buildings
Contract Type	Lump-sum / Turn-key
Completion Year	2015
Location	Kocaeli, Turkey
Construction Area	10.500 sqm





Projects

Harmanlık Mansions

Projects Detail	
Job Type	Residential Construction
Owner	Private Enterprise
Project	Harmanlık Mansions
Contract Type	Lump-sum / Turn-key
Collaboration Period	2000
Location	Sakarya, Turkey
Construction Area	8 - 3.000 sqm



Projects

Yanikköy Villas

Projects Detail	
Job Type	Residential Construction
Owner	Private Enterprise
Project	Yanikköy Villas
Contract Type	Lump-sum / Turn-key
Collaboration Period	2002
Location	Sakarya, Turkey
Construction Area	24 - 4.200 sqm



Projects

Yedievler Estates

Projects Detail	
Job Type	Residential Construction
Owner	Private Enterprise
Project	Yedievler Estates
Contract Type	Lump-sum / Turn-key
Collaboration Period	2002
Location	Sakarya, Turkey
Construction Area	7 - 3.800 sqm



Projects

Hacimercan Houses

Projects Detail	
Job Type	Residential Construction
Owner	Private Enterprise
Project	Hacimercan Houses
Contract Type	Lump-sum / Turn-key
Collaboration Period	1997
Location	Sakarya, Turkey
Construction Area	26 - 3.400 sqm



REFERENCES



AKKUYU NÜKLEER
ROSATOM



ASE / NPPA
ROSATOM



Mercedes-Benz

LIPTON
Tea & Infusions



SABANCI
HOLDING



Otokar



BriSA



posco



FERRERO



PROFESSIONAL REFERENCES



CONTACT US

Address: Sayin Egypt
Shaikh Zayed, Beverly Hills,
Polygon, 6th floor, Building 7,
Giza, EGYPT

Telephone: +20 1005891219

E-mail: info@sayinegypt.com

Web Site: www.sayinegypt.com



www.sayinegypt.com