







Intro

Hello, We Are  
**Sayın İnşaat** and  
We're Here To Make  
Your Dreams Come  
True.

# Table of Contents

<b>06</b>	OUR FOUNDER
<b>08</b>	ABOUT US
<b>09</b>	CORPORATE STRATEGY
<b>10</b>	CORE VALUES
<b>16</b>	ENGINEERING
<b>17</b>	CONSTRUCTION
<b>18</b>	EXPERIENCED SECTORS
<b>19</b>	SAYIN İNŞAAT BY NUMBERS
<b>20</b>	INDUSTRIAL BUILDINGS
<b>64</b>	OTHER BUILDINGS
<b>84</b>	REFERENCES
<b>86</b>	CONTACT US

Greetings

# Our Founder

Dear friends,

Sayın İnşaat was established in 1994 in order to bring a new dimension and understanding to the construction contractor understanding that became outdated in construction and to set the industry standards again. This innovative approach set his goal to create a modern machine park, establish a qualified staff and adopt a total quality understanding by keeping customer satisfaction at the forefront in the first days. Our company, which reached this goal in its early years, has constantly updated itself by fulfilling the requirements of the time.

In our early days, our clients, who required superior engineering and gave us the chance by delivering their comprehensive works, are among the main factors contributing to our company to come to these days, despite we had not got sufficient experience and limited capacity. We are on the path of our vision by continuing our day-to-day development by making good use of these opportunities, which they recognize with our devoted efforts. With our experience and knowledge of more than a quarter century, we have become a solution partner for the different requirements of our customers in heavy industry facilities.

The importance of human is in its being worth. It is part of our mission to build the structures we need to preserve and uphold this value in the best way possible. Many of my colleagues, who

our mission overlaps, have become valuable stakeholders of our company as parts of this new understanding.

Big firms are built on big products. That's why we have to be very particular about doing the best we can. We must find our mistakes and correct them to perfection.

It is one of our priorities to produce with a lean production approach in construction, with less waste for the environment and respecting the nature. We will continue to produce and work in order to make our world a more livable place for humanity and leave a livable world to future generations by carrying our national recognition to the international level.

**M. Fahri Sayın**  
Civil Engineer  
Founder and President



# Sayın İnşaat

Sayın İnşaat Construction Company (SAYIN) is a Turkish general contracting company that has been working in various cities of Turkey and is established in 1994. Becoming a well-known contractor in the light of 26-year experience in business, SAYIN had worked and has been working with significant national and international clients in multiple industries.

Having completed many remarkable industrial, commercial and residential projects in years, SAYIN had a chance to extend its capabilities and skills to provide its clients with diversified solutions on sophisticated projects, which enabled SAYIN to work in different size and type of projects at the same time.

In addition to General Contractor Services that SAYIN provides, the company also offers Engineering and Solution Partnership Services that are based on the unique demands of clients with particular project requirements.





## About Us

# CORPORATE STRATEGY

## Vision

---

Forever thrivingly to become  
Turkey's leading and world wide  
known industrial builder.

“ **OUR MISSION  
HAS ALREADY  
STARTED!** ”

## Mission

---

We need to deliver an impeccable product for our clients. We will adopt innovative digital design and application for manufacturing approaches to deliver a revolutionary offer for sector. Our mission is to enhance in an environment of reciprocal commitment, loyalty and respect. We determine to protect our prestige of being an expert construction company that complete the works within budget, on time and contractual scope of quality. We aim to be a successful industrial construction commitment company is desired by customers. Hereafter, a quality end result will continue to grow our reputation with our clients long after we have finished our works. We will constructively challenge our current methods and enhance the quality, efficiency, effectiveness, sustainability and last user experience for our clients.

# CORE VALUES

## QUALITY

Perpetual enhancement of quality is the most crucial fundamental factors that enable SAYIN to get a competitive advantage in the construction sector in respect to expected quality, timely and reasonable budget.

- We must complete every project according to scope of contract. Thus, our essential construction methods and business approach based on having global validity certifications such as ISO9001, ISO14001, ISO45001.
- We obsess about quality and make an effort to get it right first time and recognising that a quality begins with detailed design.
- SAYIN has essential objective is to succeed zero fault.
- We have Lessons Learned understanding and database since 2015, thus before confronting system defects our effective project teams can prevent the case.
- SAYIN has adopted PDCA cycle in order to prevent any system defects.

### Act

- Corrective action
- Prevent defect from re-occurring

### Check

- Check all non conformities against specification
- Check work executed per approved shop drawing
- Check approved material installed



### Plan

- Prepare shop drawings
- Submit materials
- Get shop drawing approved
- Get materials approved

### Do

- Follow approved shop drawings
- Use approved materials
- Follow method of statement
- Follow manufacturer's recommendations

## SUSTAINABILITY

We have an object beyond profit. Which means that the energy, aspiration and commitment of our company family can reinforce society's welfare beyond the construction we build. Sustainability is at the center of our business strategy. Since 1994 we have been ambitious regarding leaving the true kind of social, environmental and economic hand down.

Sayın İnşaat Construction Company (SAYIN) see sustainability in widest sense as;

- Generating a unique difference to the local people of project location such as by supplying work experience and new apprenticeships opportunity
- Trying to reduce carbon emissions for instance via systematical logistics and supplying a construction material which has less carbon footprint and helping our supply chain to execute the same understanding.
- Sustainability is embedded in time, cost, quality, clients and ultimately our legacy and continuous growth.

## RESPECT

- We value and promote our brand and heritage.
- We aim to generate long-term loyalty with our customers.
- Stakeholders, such as community engagement is important.
- We encourage localism in terms of using resources nearby the project location.
- We determined to decrease our carbon footprint by procuring resources on a sustainable basis.
- We establish good relations with project influenced communities and neighbours.

## PEOPLE

We place a strong emphasis on learning and development. Employees who are taking on new difficulties and learning new skills are much more likely to come up with new ideas. Businesses and practices can arise the volume on innovation even further by supplying the right areas such as forums, working groups, motivation organizations etc. where people from different disciplines and functions can work collaboratively for a common mission.

- Health and safety fact always comes ahead.
- Mutually complementary work teams are the most effective. In order to do so, we employ experts and professionals to develop our knowledge in every type of construction.
- Becoming a good company to enhance a career for sector employees.
- We create a value culture where our people encouraged to imagine and supply each opportunity to cultivate these dreams into reality.

## SUPPLY CHAIN

Our supply chain should be a reflection of the company. Thus, we intended to ensure supply partners achieve the highest standards. We procure goods and services according to our sustainable procurement policy. We do not distinguish our subcontractors and suppliers from our own workers. We implement the same set of H&S standards that we hold ourselves responsible to and expect them to obey with them as well. We determine to promote and enhance our subcontractors by ensuring that fair contract prices and terms are applied and respected.

We evaluate and procure work in accordance with following criterias

- Do they have quality management systems in order to manage requirements of each construction works?
- Can subcontractors continue to develop and improve?
- Do they have related environmental policy?
- Are they perceptual to the management and promotion education opportunities or training and enhancement of site operatives?



## HEALTH & SAFETY

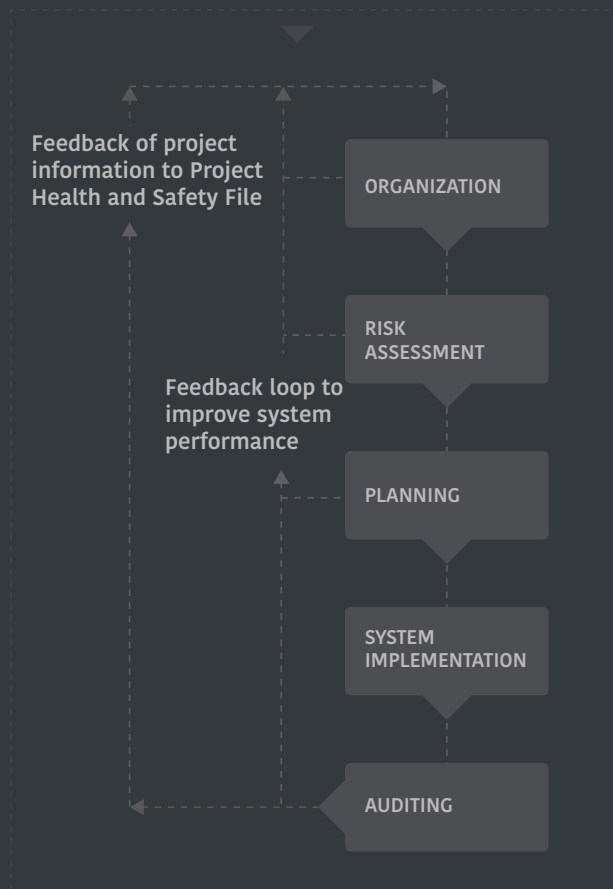
Protection the health, safety and well-being of our employee at work is of supreme significance and we work to supply working environments which are safe and without risk for health of our staff.

- Communication is a key component of our H&S Management. To be able to engage with our employees at all levels, we use different communication techniques
- Our organization for H&S Management involves establishing the responsibilities and interpersonal relationships essential to encourage a favourable H&S culture on a site.

SAYIN has developed implemented H&S policy and Management system. So we;

- Have organizational structure for health and safety management.
- Have developed necessary supportive culture to provide successful implementation of policies
- Carry out individual project risk assessment.
- Train all employees such as safe working practices, supplying workforces with proper information and instructions.
- Provide personal protective equipment and training to use
- Continously monitor H&S management activities.
- Have access to trustworthy medical advice on occupational health

- Conduct environmental surveys at site and office to provide hygiene and safety
- Provide the provision of qualified First Aid Staff and facilities.
- Encourage our employees to maintain their health by providing them information and advice.





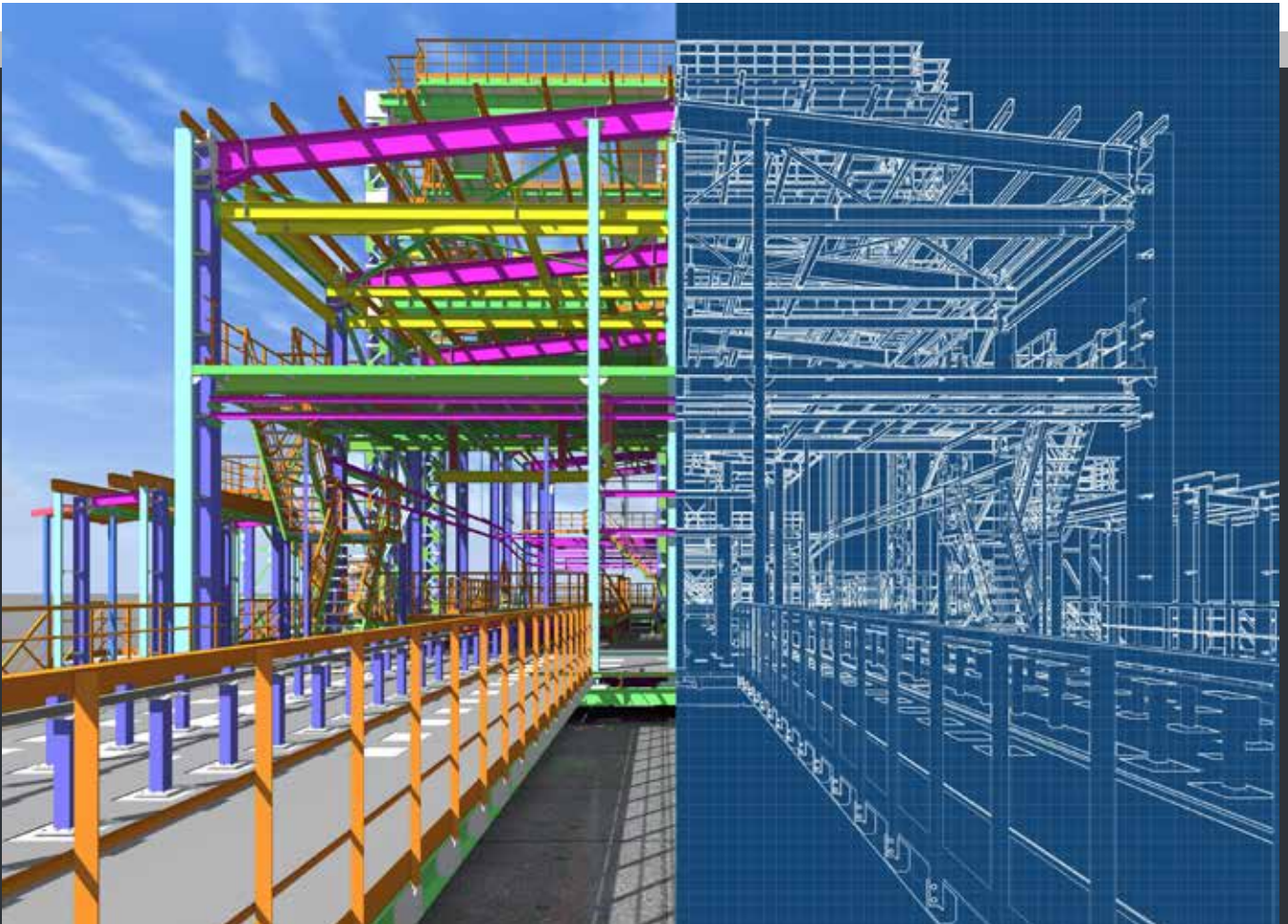
## About Us

# ENGINEERING

Our aim is to pro-actively impact and manage the evolution of every step of design thus we can offer deliverable solutions. Sayin İnşaat Construction Company (SAYIN) Engineering Group presents civil, structural, architectural, electrical, mechanical, process and piping design.

## SERVICES

- Feasibility.
- Detail engineering according to customer requirements.
- Technical drawings for application.
- Commissioning management.





## About Us

# CONSTRUCTION

We present full of ability in any type of construction, creating effective teams of construction experts. Versatile construction management teams and methods are suitable for planning, executing and monitoring grand and complex projects to secure timely, accurate quality and safe construction.

As being contractor of the construction sector we have ability to work on different type of contracts such as;

- Design / Bid / Build (Traditional)
- Design Build
- Project Manager Type
- Guaranteed Maximum Price
- Build-Own-Operate-Transfer
- Turnkey Contracts

During construction phase, SAYIN has several steps to ensure the project progress accurate. These are;

- Planning and scheduling
- Procurement
- Monitoring and control
  - Subcontractors approval
  - Shop drawings
  - Procurement
  - Equipment and workforce
  - Cashflow curve
  - Time control
  - Progress reports and meetings
  - Variation orders
  - Inspections
  - Testing
  - As-built drawings
  - Commissioning

Sayın İnşaat Construction Company (SAYIN) has succeeded and well known for its capability to manage particular construction manpower from different regions and nationalities. SAYIN is also well known regarding to employ local workforces as highest as possible. By this way, every project contributes the local economy of the project location. Besides, SAYIN owns machinery equipment for every step and type of construction including cranes and piling equipment.



About Us

# EXPERIENCED SECTORS



Power Plant  
Nuclears



Heavy Industry  
Process Plants



Petrochemicals and  
Natural Gas Plants



Automobile  
Factory Campus



Hydro Power  
Plants



Metallurgy  
Mining



Food Industry  
Plants



Infrastructure and  
Transportation



Retail



Business  
Centers



Educational  
Buildings



Residential

# SAYIN İNŞAAT

## BY NUMBERS



Establishment  
**1994**



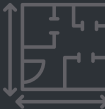
Experience in Heavy  
Industrial Buildings  
**28 years**



Number of Employees  
**1000+**



Completion M<sup>2</sup> so far  
**2.500.000+ m<sup>2</sup>**



Completion Ability M<sup>2</sup> Per Year  
**1.000.000 m<sup>2</sup>**



Total Amount of Ongoing Projects in 2021  
**1.240.000 TL**

# PROJECTS

Projects

# INDUSTRIAL BUILDINGS

AKKUYU NUCLEAR POWER PLANT LOT 8, LOT 11, LOT 22

BRITISH MOTOR COMPANY (BMC)

TOYOTA AUTOMOTIVE

HYUNDAI AUTOMOTIVE

ERDEMİR STEEL

TURKISH PETROLIUM REFINERIES (TÜPRAŞ)

OMV PETROL OFİSİ

ASSAN ALUMINUM COMPANY

BRIDGESTONE SABANCI (BRİSA)

OTOKAR AUTOMOTIVE & DEFENSE INDUSTRIES

FORD MOTOR GÖLCÜK

FORD TRUCK İNÖNÜ

HYUNDAI STEEL COMPANY

KNAUF GMBH

POSCO ASSAN TST

CPL CARTONPLAST GROUP GmbH

RÖNESANS BOTAŞ NATURAL GAS STORAGE FACILITY

TOYOTA TSUSHO CORPORATION

GOODYEAR TIRES

HENDEK GALVANIZED STEEL

## Projects

# Akkuyu Nuclear Power Plant

### Projects Detail

Job Type	Nuclear Power Plant
Owner	ROSATOM / JV
Project	Nuclear Power Plant LOT 8, LOT 11, LOT 22
Work Formation	SMETA / Turn-key
Collaboration Period	Under Construction
Location	Mersin, Turkey
Construction Area	158.000 sqm

\*\* It is not allowed to take & publish pictures of any part of the facilities due to Owner's contractual restrictions.





## Projects

# British Motor Company (BMC)

### Projects Detail

Job Type	Industrial Construction
Owner	British Motor Company (BMC)
Project	Automotive & Defense Industries Phase 1 - Military Tank Factory
Contract Type	Lump-sum / Turn-key
Collaboration Year	Under Construction - 2020
Location	Sakarya, Turkey
Construction Area	100.000 sqm











## Projects

# Toyota Automotive

### Projects Detail

Job Type	Industrial Construction
Owner	Toyota Automotive
Project	Automobile Factory Campus
Work Formation	Multi-site
Collaboration Period	1994 - Present
Location	Sakarya, Turkey
Construction Area	55.000 sqm









## Projects

# Hyundai Automotive

### Projects Detail

Job Type	Industrial Construction
Owner	Hyundai Automotive
Project	Automobile Factory Campus
Work Formation	Multi-site
Collaboration Period	1998 –Present
Location	Kocaeli, Turkey
Construction Area	65.000 sqm











## Projects

# Erdemir Steel

### Projects Detail

Job Type	Industrial Construction
Owner	Erdemir Steel
Project	Slag Granules Plant, NO.3 Warehouse, Kizilcapinar Hydro Power Plant
Contract Type	Unit-Price / Turn-key
Completion Year	Under Construction - 2020
Location	Kdz. Ereğli, Zonguldak, Turkey
Construction Area	55.000 sqm









DSİ ERDEMLİR







## Projects

# Turkish Petroleum Refineries (TÜPRAŞ)

### Projects Detail

Job Type	Industrial Construction
Owner	Turkish Petroleum Refineries (TÜPRAŞ)
Project	Oxygen Recharge Units & Buildings
Work Formation	Multi-site
Collaboration Period	2017 – Present
Location	Kocaeli, Turkey
Construction Area	8.500 sqm

\*\* It is not allowed to take & publish pictures of any part of the facilities due to Owner's contractual restrictions.



# Turkish Petroleum Refineries (TÜPRAŞ)

## Projects Detail

Job Type	Industrial Construction
Owner	Turkish Petroleum Refineries (TÜPRAŞ)
Project	Laboratories & Auxiliary Buildings
Work Formation	Multi-site
Collaboration Period	2018-2019
Location	Kırıkkale, Turkey
Construction Area	3.500 sqm

\*\* It is not allowed to take & publish pictures of any part of the facilities due to Owner's contractual restrictions.

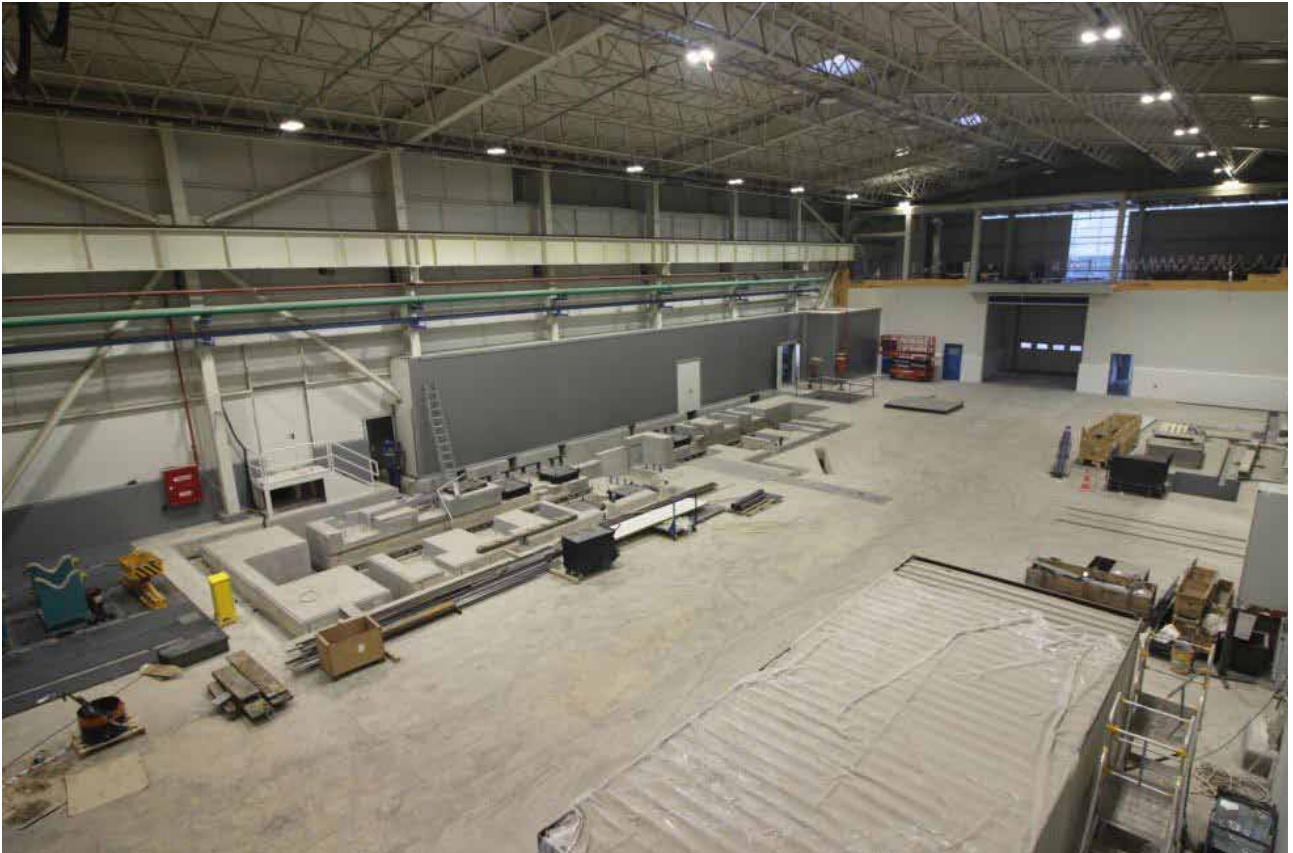


## Projects

# Assan Aluminium Company

### Projects Detail

Job Type	Industrial Construction
Owner	Assan Aluminium Company
Project	Aluminum Factory Campus
Contract Type	Unit Price / Structural Works
Collaboration Period	2017
Location	Kocaeli, Turkey
Construction Area	10.000 sqm





## Projects

# OMV Petrol Ofisi

### Projects Detail

Job Type	Industrial Construction
Owner	OMV Petrol Ofisi
Project	LNG Storage Facility
Contract Type	Lump-sum / Structural Works
Collaboration Period	2013
Location	Kocaeli, Turkey
Construction Area	20.000 sqm





## Projects

# Bridgestone Sabanci (BriSa)

Projects Detail	
Job Type	Industrial Construction
Owner	Bridgestone Sabanci (BriSa)
Project	Tyre Manufacturing Facilities
Work Formation	Multi-site
Collaboration Period	2007 – 2016
Location	Kocaeli, Turkey
Construction Area	10.400 sqm

\*\* It is not allowed to take & publish pictures of any part of the facilities due to Owner's contractual restrictions.





## Projects

# Otokar Automotive & Defense Industries

### Projects Detail

Job Type	Industrial Construction
Owner	Otokar Automotive & Defense Industries
Project	Electromagnetic Compatibility Laboratories
Work Formation	Multi-site
Collaboration Period	2010 - 2014
Location	Sakarya, Turkey
Construction Area	5.700 sqm

\*\* It is not allowed to take & publish pictures of any part of the facilities due to Owner's contractual restrictions.



## Projects

# Ford Motor Company - Cars

Projects Detail	
Job Type	Industrial Construction
Owner	Ford Motor Company - Cars
Project	Additional Production Lines
Work Formation	Multi-site
Collaboration Period	2011 - 2014
Location	Kocaeli, Turkey
Construction Area	7.500 sqm

\*\* It is not allowed to take & publish pictures of any part of the facilities due to Owner's contractual restrictions.



## Projects

# Ford Motor Company - Trucks

Projects Detail	
Job Type	Industrial Construction
Owner	Ford Motor Company - Trucks
Project	Extention of Existing Buildings
Work Formation	Multi-site
Collaboration Period	2011 - 2013
Location	Eskişehir, Turkey
Construction Area	4.800 sqm

\*\* It is not allowed to take & publish pictures of any part of the facilities due to Owner's contractual restrictions.

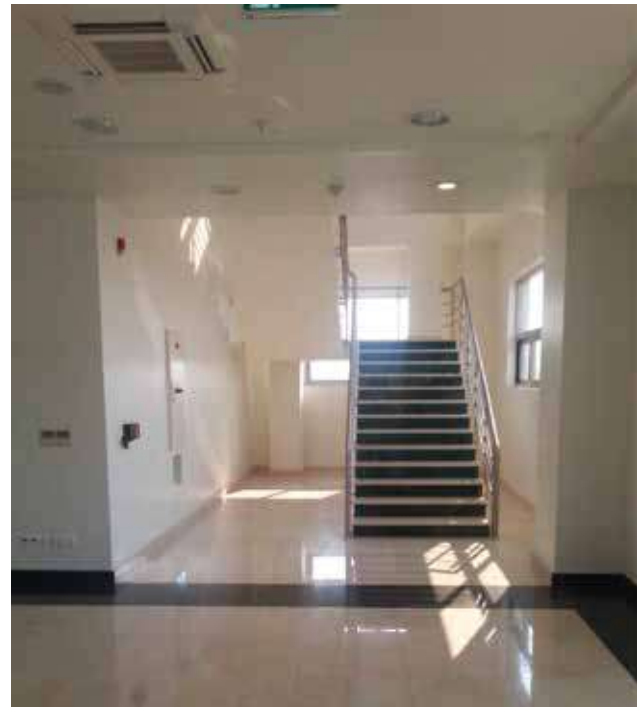


## Projects

# Hyundai Steel Company

### Projects Detail

Job Type	Industrial Construction
Owner	Hyundai Steel Company
Project	Automotive Steel Factory
Contract Type	Lump-sum / Turn-key
Collaboration Period	2012
Location	Kocaeli, Turkey
Construction Area	22.000 sqm





## Projects

# Knauf Gmbh

### Projects Detail

Job Type	Industrial Construction
Owner	Knauf Gmbh
Project	Insulation Materials Factory
Contract Type	Design-Build
Collaboration Period	2012
Location	Eskisehir, Turkey
Construction Area	12.000 sqm





## Projects

# Posco Assan TST

### Projects Detail

Job Type	Industrial Construction
Owner	Posco Assan TST
Project	Stainless Steel Production Factory
Contract Type	Unit Price / Structural Works
Collaboration Period	2012
Location	Kocaeli, Turkey
Construction Area	8.500 sqm





## Projects

# CPL Cartonplast Group Gmbh

### Projects Detail

Job Type	Industrial Construction
Owner	CPL Cartonplast Group Gmbh
Project	Reusable Layer Pad Factory
Contract Type	Unit Price / Turn-key
Collaboration Period	2014
Location	Bursa, Turkey
Construction Area	6.000 sqm







## Projeler

# Rönesans Botaş Natural Gas Storage Facility

Projects Detail	
Job Type	Industrial Construction
Owner	Rönesans Heavy Industries
Project	Natural Gas Storage Facility
Contract Type	Unit Price / Turn-key
Collaboration Period	2018
Location	Silivri, Turkey
Construction Area	157.000 sqm



## Projects

# Toyota Tsusho Corporation

### Projects Detail

Job Type	Industrial Construction
Owner	Toyota Tsusho Corporation
Project	Automobile Parts Factory
Contract Type	Lump-sum / Turn-key
Collaboration Period	2014
Location	Sakarya, Turkey
Construction Area	7.500 sqm



## Projects

# Goodyear Tires

### Projects Detail

Job Type	Industrial Construction
Owner	Goodyear Tires
Project	Tire Production Factory
Contract Type	Multi-site
Collaboration Period	1996 - 2007
Location	Sakarya, Turkey
Construction Area	9.000 sqm



## Projects

# Hendek Galvanized Steel

### Projects Detail

Job Type	Industrial Construction
Owner	Hendek Galvanized Steel
Project	Galvanized steel manufacturing facility
Contract Type	Lump-sum / Turn-key
Collaboration Period	2017
Location	Hendek, Turkey
Construction Area	7.500 sqm







Projects

# OTHER BUILDINGS

İSTANBUL STOCK EXCHANGE (BİST)

SAKARYA CHAMBER OF CAR DEALERS

PALMIYE RESIDENCE

DEMİRCİOĞLU GROUP

BURGER KING

SABANCI UNIVERSITY

KOCAELİ COLLEGE

HARMANLIK MANSIONS

YANIKKÖY VILLAS

YEDİEVLER ESTATES

HACIMERCAN HOUSES

HOTEL BALTÜRK

VOLVO & RENAULT TRUCKS

## Projects

# İstanbul Stock Exchange (BIST)

### Projects Detail

Job Type	Commercial Construction
Owner	İstanbul Stock Exchange (BIST)
Project	Stock Exchange & Office Buildings
Contract Type	Lump-sum / Turn-key
Collaboration Period	2017
Location	İstanbul, Turkey
Construction Area	35.000 sqm





## Projects

# Sakarya Chamber of Car Dealers

### Projects Detail

Job Type	Commercial Construction
Owner	Sakarya Chamber of Car Dealers
Project	Car Dealers Center
Contract Type	Lump-sum / Turn-key
Completion Year	Under Construction - 2020
Location	Sakarya, Turkey
Construction Area	33.000 sqm





## Projects

# Palmiye Residence

### Projects Detail

Job Type	Residential Construction
Owner	Palmiye Residence
Project	Residential Building
Contract Type	Lump-sum / Turn-key
Collaboration Period	2017
Location	İstanbul, Turkey
Construction Area	26 - 4500 sqm





## Projects

# Demircioglu Office Building

### Projects Detail

Job Type	Commercial Construction
Owner	Demircioglu Grup
Project	Office Building
Contract Type	Lump-sum / Turn-key
Collaboration Period	2016
Location	Sakarya, Turkey
Construction Area	3.600 sqm





## Projects

# Burger King Restaurant

### Projects Detail

Job Type	Commercial Construction
Owner	Burger King
Project	Restaurant Branch
Contract Type	Lump-sum / Turn-key
Collaboration Period	2010
Location	Düzce, Turkey
Construction Area	2.500 sqm



## Projects

# Sabancı University

### Projects Detail

Job Type	Educational Construction
Owner	Sabancı University
Project	Art Center & Dormitories
Work Formation	Multi-site
Collaboration Period	2016 - 2020
Location	İstanbul, Turkey
Construction Area	15.000 sqm





## Projects

# Kocaeli College

### Projects Detail

Job Type	Educational Construction
Owner	Kocaeli Kultur College
Project	K-12 School Buildings
Contract Type	Lump-sum / Turn-key
Completion Year	2015
Location	Kocaeli, Turkey
Construction Area	10.500 sqm





## Projects

# Harmanlık Mansions

### Projects Detail

Job Type	Residential Construction
Owner	Private Enterprise
Project	Harmanlık Mansions
Contract Type	Lump-sum / Turn-key
Collaboration Period	2000
Location	Sakarya, Turkey
Construction Area	8 - 3.000 sqm



## Projects

# Yanikköy Villas

### Projects Detail

Job Type	Residential Construction
Owner	Private Enterprise
Project	Yanikköy Villas
Contract Type	Lump-sum / Turn-key
Collaboration Period	2002
Location	Sakarya, Turkey
Construction Area	24 - 4.200 sqm



## Projects

# Yedievler Estates

### Projects Detail

Job Type	Residential Construction
Owner	Private Enterprise
Project	Yedievler Estates
Contract Type	Lump-sum / Turn-key
Collaboration Period	2002
Location	Sakarya, Turkey
Construction Area	7 - 3.800 sqm





## Projects

# Hacimercan Houses

### Projects Detail

Job Type	Residential Construction
Owner	Private Enterprise
Project	Hacimercan Houses
Contract Type	Lump-sum / Turn-key
Collaboration Period	1997
Location	Sakarya, Turkey
Construction Area	26 - 3.400 sqm



## Projects

# Hotel Baltürk

### Projects Detail

Job Type	Hotel Construction
Owner	Hotel Baltürk
Project	Hotel Baltürk
Contract Type	Lump-sum / Turn-key
Collaboration Period	2012
Location	Sakarya, Turkey
Construction Area	50 - 6.000 sqm



## Projects

# Volvo & Renault Trucks

### Projects Detail

Job Type	Industrial Construction
Owner	Volvo & Renault Trucks
Project	Truck Dealer Facility
Contract Type	Lump-sum / Turn-key
Collaboration Period	2008
Location	Kocaeli, Turkey
Construction Area	9.600 sqm



# REFERENCES



Her yükte birlikte



# CONTACT US

**Address:** Sayın İnsaat Construction  
Beskoprü Mahallesi  
D-100 Karayolu Uzeri, No: 176  
54050 Serdivan / Sakarya  
TURKEY

**Telephone :** +90.264.291.19.01

**E-mail :** [info@sayininsaat.com](mailto:info@sayininsaat.com)

**Web Site:** [www.sayininsaat.com](http://www.sayininsaat.com)





[www.sayininsaat.com](http://www.sayininsaat.com)